

Gestetner

DSm790
DSm7110
DSm7135

**MULTIFUNCTION
SYSTEMS**



Get it done.
On time. Every time.

Gestetner



Get More Done.

Gestetner Digital Imaging Systems combine the power of network connectivity, with printing and scanning—all from one location.

Based on your specific applications and requirements, we will provide the right solution to boost your productivity, save you money and sharpen your competitive edge.

For further information or a demonstration of this or other Gestetner Digital Imaging Systems, contact your authorized Gestetner dealer.

www.gestetnerusa.com

Productivity you can count on.

Fast, efficient document workflow is the everyday reality delivered by Gestetner DSm790/DSm7110/DSm7135 Multifunction Systems. With their superior dependability and production-level print speeds—up to 135-ppm—these cost-effective systems can move your organization to new levels of productivity and effectiveness.



The Super VGA Color Touch Panel Display greatly simplifies operations and allows you to view scanned documents in color.

Get it done faster.

Gestetner DSm790/DSm7110/DSm7135 systems, with their perfect blend of advanced technology, exceptional reliability and extensive finishing options, can handle volumes of work with ease.

- Finish Your Projects Faster. With a maximum speed of 135 pages per minute, the Gestetner DSm7135 is the fastest MFP Gestetner has ever developed, allowing you to produce more high-volume and rush projects in house. Much of this amazing leap in performance can be attributed to a unique new feeding system that all but eliminates the gaps between sheets.

- Boost Productivity. The Fiery EB-135 Print Controller can keep pace with even the fastest production environments and even extends your printing capabilities with exceptional PostScript™ processing capabilities.
- Accelerate Last-Minute Edits. Now you can edit your work right at the system, quickly and easily, in a variety of ways. For example, you can mix one- and two-sided originals, work in Bates numbering and adjust for page creep, which is extremely useful when printing booklets.

Scan document
via Document
Feeder

View on your
computer screen
or send to others

Preview thumbnails
on screen before
you send by e-mail



- Automate Your Workflow. Gestetner provides a robust array of versatile finishing options designed to meet your capabilities now, and grow as your needs grow.

- Copy at a Fast Pace. Copy at high resolutions and fast production speeds with a limitless paper supply and have access to all the standard and optional functions you need to get desired results.

Not just speed, reliable speed.

A high-volume MFP is a special class of digital output systems. Because the volumes it must produce are so great, it must operate without interruption. That's why Gestetner DSm790/DSm7110/DSm7135 systems have been engineered from top to bottom to ensure reliability.

- Maximum Uptime. New, reliability-enhancing features include a Multi-Feed Detection System that automatically removes double feeds, ensuring seamless production.
- Minimal Mistakes. Job Preview allows you to see your entire job on the LCD screen right at the MFP, simplifying the process for walk-up users. Preview your scanned documents in full color, quickly set-up your security requirements and much more.

Guarding Your Security

At Gestetner, we understand your concerns about document security, too. So we've incorporated a wide range of protective measures into the Gestetner DSm790/DSm7110/DSm7135 systems to ensure your complete peace of mind.



DataOverwriteSecurity System (DOSS) automatically overwrites "latent information" (the digital traces of your data) on the hard drive after every copy, print and scan job. This is the same technology the National Security Agency uses to protect information on its digital hard drives. In addition, new network/user authentication provides full control and management across your entire organization.

Dsm790 Dsm7110 Dsm7135

Every device should be this easy to operate.

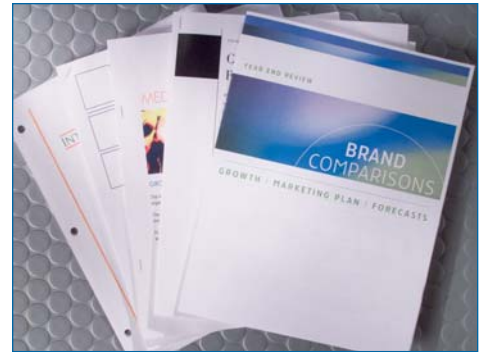
Incorporating today's most advanced technologies, Gestetner Dsm790/Dsm7110/Dsm7135 systems are simpler and easier than ever to operate. The result is a surprisingly approachable system designed to respond quickly to your requirements and reduce time spent at the machine.

- **Out of Sight, But Not Out of Mind.**

Gestetner's standard WebImageMonitor lets you check toner and paper levels, change print queues, merge jobs, receive e-mail error notifications and otherwise check up on the various device functions. And @Remote Intelligent Remote Management System automatically reports usage meter data, freeing up staff time for more essential tasks.

- **Advanced Job Management.**

Gestetner's PrintStation 0135R MicroPress connectivity further simplifies your life by improving make-ready capabilities, automating and enhancing workflow management. It gives you the flexibility and control you need to optimize speed and efficiency while minimizing downtime.



A wide range of finishing and output options allow you to produce professionally finished documents.



With Gestetner's new Trained Customer Replacement Unit (TCRU) design, a variety of components can be changed by trained operators, keeping production interruptions to a minimum and maximizing system uptime and availability.

Your Partner In Environmental Solutions

These systems are ENERGY STAR® compliant, continuing our long-standing commitment to developing office solutions with superior energy and supply-saving features, including:



- Quick Start-Up (no Warm-up) Technology
- Power-saving Sleep Mode
- Duplex Mode
- Low Noise Levels
- Toner Recycling
- Minimal Ozone Emissions
- Restriction of Hazardous Materials (ROHS)



To cut costs and save time, Gestetner's unique Book Fold function, when combined with the BK5010 Booklet Maker, allows you to create professional booklets in-house.

DSm790/DSm7110/DSm7135



GBC STREAMPUNCH III

On-line punch unit with customer replaceable die sets that's now fully integrated with the MFP. Activate from either the Touch Panel Display or straight from the Print Driver.

CI5000 COVER INTERPOSER

The Interposer makes it easy to insert color pre-printed documents into your jobs. Each of the Interposer's two sources boasts a 200-sheet capacity with a maximum paper size up to 13" x 18".

COLOR TOUCH PANEL DISPLAY

A new easy-to-use Color Touch Panel Display helps you program jobs quickly, especially for walk-up users.

NEW RT5010 DLT/LCT LARGE CAPACITY TRAY

Provides a choice of Large Capacity Trays for feeding all types and sizes of documents, including up to 13" x 18" sized paper. Universally designed paper trays support the same sizes and weights (16 lb. Bond – 80 lb. Cover) across the entire system.

HIGH-SPEED COLOR SCANNER

Scan your documents in black and white or color, all at exceptional speeds.

SR5000 FINISHER

Staples up to 100 sheets in multiple different positions and now supports finishing paper sizes up to 13" x 18".

BK5000 SADDLE STITCH UNIT

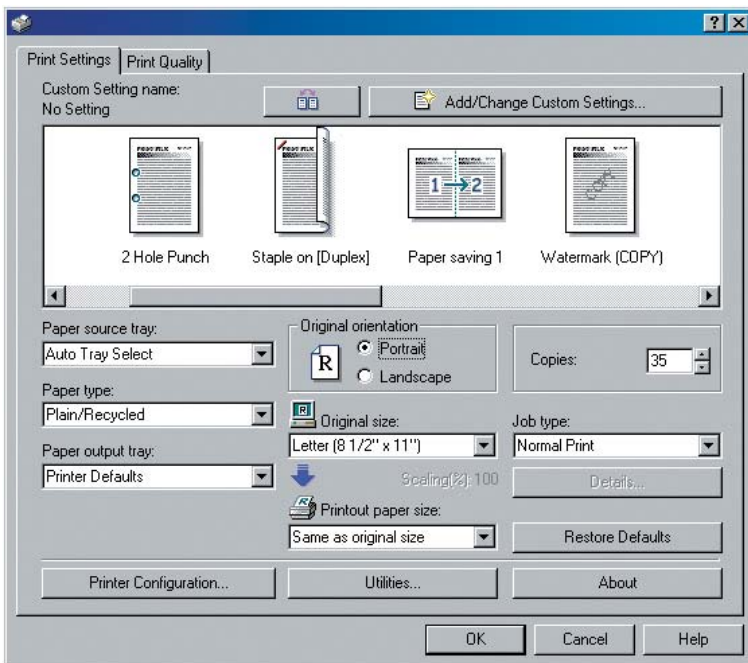
New finishing technology enables you to create saddle-stitched booklets at the rated speed of the MFP.

ZF4000 Z-FOLD UNIT

Integrated feature that provides the ability to have larger sheets of paper Z-Folded on-line into your presentations. Engineering specifications and schematics are just some of the applications that are perfect for the new ZF4000.

BASE SYSTEM

New 90-ppm
New 110-ppm
New 135-ppm



What you see is what you get.

Icons are easier and faster to understand than text. That's why Gestetner's Refined Print Command Stream (RPCS) driver, allows you to represent complex job functions in a single, simple icon-based format.

Gestetner DSm790/DSm7110/DSm7135 Specifications

GENERAL SPECIFICATIONS	SYSTEM ACCESSORIES (cont.)	SCANNER SPECIFICATIONS
<p>Warm-up Time Less than 360 seconds</p> <p>Standard Paper Weights 16 lb. - 40 lb. Bond 50 lb. - 80 lb. Cover 90 lb. - 110 lb. Index</p> <p>Standard Paper Capacity Tray 1: 1,000 sheets x 2 Tray 2: 500 sheets Tray 3: 500 sheets</p> <p>Standard Paper Capacity 3,000 sheets</p> <p>Power Source 208 - 240V, 50/60Hz, 20A (Requires Dedicated Outlet)</p> <p>Power Consumption Gestetner DSm790/7110: Less than 3,500W with LCT & Finisher Gestetner DSm7135: Less than 4,000W with LCT & Finisher</p> <p>Dimensions (W x D x H) 34.3" x 33.9" x 58.2" (Main unit without a Finisher)</p> <p>Weight 672.4 lbs. (Main unit without a Finisher)</p>	<p>Staple Capacity 100 sheets (8.5" x 11")</p> <p>Dimensions (W x D x H) 31.5" x 28.7" x 38.5"</p> <p>Weight 165 lbs.</p> <p>BK5000 Saddle Stitch Unit</p> <p>Paper Sizes Folded 8.5" x 11" - 12" x 18"</p> <p>Paper Weights Folded 20 lb. - 24 lb. Bond</p> <p>Dimensions (W x D x H) 23.6" x 28.7" x 38.5"</p> <p>Weight 154 lbs.</p> <p>CI5000 Cover Interposer</p> <p>Paper Sizes Supported 5.5" x 8.5" - 13" x 18"</p> <p>Paper Capacity 2 x 200 sheets</p> <p>Paper Weight 17 lb. Bond - 80 lb. Cover</p> <p>Dimensions (W x D x H) 27.9" x 28.7" x 50"</p> <p>Weight 99.2 lbs.</p> <p>BY5000 Multi Bypass Tray</p> <p>Paper Capacity 500 sheets (20 lb. Bond)</p> <p>Paper Sizes Supported 5.5" x 8.5" - 12" x 18" (RT5000) 5.5" x 8.5" - 13" x 18" (RT5010)</p> <p>PU5000 Punch Unit</p> <p>Punch Type 2 or 3 holes (User Selectable)</p> <p>Punch 16 lb. Bond - 90 lb. Index</p> <p>Systems Supported Gestetner DSm790/DSm7110 only</p> <p>GBC StreamPunch III</p> <p>Punch Type Customer Replaceable Die Sets (7)</p> <p>Paper Sizes Supported 8.5" x 11" Long Edge Feed (11" side only)</p> <p>Systems Supported Gestetner DSm790/DSm7110/ DSm7135</p> <p>Dimensions (W x D x H) 12" x 28.5" x 38.5"</p> <p>Weight 154 lbs.</p>	<p>Scan Speed 80 spm (black and white) 80 spm (color)</p> <p>Optical Resolution 100/150/200/300/400/600 dpi</p> <p>Resolution for Delivery Scanner 100/150/200/300/400/600 dpi</p> <p>TWAIN Resolution 100 - 1200 dpi (color and black and white)</p> <p>File Formats TIFF/JPEG/PDF and High Compression PDF</p> <p>Scan-to-Email Requirement SMTP Gateway and TCP/IP</p> <p>Email Addresses 2,000 addresses</p> <p>Max Address Per Send 500 addresses</p> <p>Address Support 100 addresses Via LDAP</p> <p>Scan-to-Folder Protocol Support SMB/FTP/NCP</p> <p>Resolution 100/150/200/300/400/600 dpi</p> <p>Max. Client Folders Per Send 50 Client Folders</p> <p>File Types Supported Single Page TIFF/JPEG Single Page PDF Multi Page TIFF Multi Page PDF High Compression PDF</p> <p>Security Authentication Windows Authentication LDAP Authentication Basic Authentication</p> <p>Secure Socket Layer Support Network Protocol On/Off SNMP v3 Support PDF Encryption Driver Encryption Key (PCL/RPCS Driver) Copy Data Security System Type E Data Overwrite Security Unit (DOSS) Type F</p>
SYSTEM SPECIFICATIONS		
<p>First Copy Gestetner DSm790: 3.5 seconds Gestetner DSm7110: 3.2 seconds Gestetner DSm7135: 3.0 seconds</p> <p>Copy Size 5.5" x 8.5" to 13" x 18"</p> <p>HDD Capacity 160GB x 2 (360GB)</p> <p>Reduction/Enlargement 25% - 400% in 1% increments</p>		
SYSTEM ACCESSORIES	NETWORK CONNECTIVITY OPTIONS	ADDITIONAL OPTIONS
<p>Automatic Reversing Document Feeder</p> <p>Original Paper Weight 11 - 34 lb. Bond (Simplex) 14 - 28 lb. Bond (Duplex)</p> <p>RT5000 LT/LCT Large Capacity Tray</p> <p>Paper Sizes Supported 5.5" x 8.5" - 8.5" x 11"</p> <p>Paper Capacity Tray 4: 1,000 sheets Tray 5: 1,000 sheets Tray 6: 2,550 sheets</p> <p>Paper Weights Tray 4: 16 lb. Bond - 80 lb. Cover Tray 5: 16 lb. Bond - 80 lb. Cover Tray 6: 16 lb. Bond - 90 lb. Index</p> <p>Dimensions (W x D x H) 21.2" x 28.7" x 38.5"</p> <p>Weight 194 lbs.</p> <p>RT5010 DLT/LCT Large Capacity Tray</p> <p>Paper Sizes Supported 5.5" x 8.5" - 13" x 18"</p> <p>Paper Capacity Tray 4: 1,000 sheets Tray 5: 2,000 sheets Tray 6: 1,000 sheets</p> <p>Paper Weights Tray 4: 16 lb. Bond - 80 lb. Cover Tray 5: 16 lb. Bond - 80 lb. Cover Tray 6: 16 lb. Bond - 80 lb. Cover</p> <p>Dimensions (W x D x H) 34.7" x 28.8" x 38.6"</p> <p>Weight 194 lbs.</p> <p>SR5000 100-Sheet Finisher</p> <p>Proof Tray 500 sheets (8.5" x 11") 250 sheets (8.5" x 14" or larger)</p> <p>Paper Weight Proof/Shift 16 lb. Bond - 80 lb. Cover Shift Tray 3,000 sheets (8.5" x 11" - LEF) 1,500 sheets (8.5" x 14" - 11" x 17" SEF) 1,000 sheets (12" x 18")</p>	<p>Printer/Scanner Kit Type 1350</p> <p>Windows Drivers RPCS 95/98/ME/NT4.0/2000/XP/ Server 2003</p> <p>PCL5e 95/98/ME/NT4.0/2000/XP/ Server 2003</p> <p>PCL 6 95/98/ME/NT4.0/2000/XP/ Server 2003</p> <p>Adobe PostScript3 (option) 95/98/ME/NT4.0/2000/XP/ Server 2003</p> <p>Utilities Supported WebImageMonitor Web SmartDeviceMonitor SmartDeviceMonitor Printer Utility for Mac IEEE1394 Utility USB Printing Support PDF Direct Printing (through DeskTopBinder) DeskTopBinder / DeskTopBinder Lite ScanRouter / ScanRouter Lite</p> <p>Printer Options IEEE1284 Interface Type A IEEE1394 Interface Type B IEEE802.11b Wireless Interface Type H Gigabit Ethernet Type 7300 Bluetooth Interface Unit Type 3245</p> <p>Host Printing Options Document Output Technologies (DOT) RA2K Integration for IPDS OMS400</p>	<p>BK5010 Production Booklet Maker</p> <p>TR5010 Trimmer Unit</p> <p>CF5010 Cover Feeder Unit</p> <p>BF5010 Book Folder</p> <p>Fiery EB-135 Print Controller</p> <p>PrintStation 0135R MicroPress Connectivity</p>

Gestetner

Gestetner Five Dedrick Place, West Caldwell, NJ 07006

GESTETNER® is a registered trademark of Ricoh Corporation. Windows® and Windows® 95/98/ Me/NT4.0/2000/XP are registered trademarks of Microsoft Corporation. Macintosh®, Mac® OS and AppleTalk® are registered trademarks of Apple Computer, Inc. Adobe® and PostScript® are registered trademarks of Adobe Systems, Inc. RPCS™ is a trademark of Ricoh Company, Ltd. All other trademarks are the property of their respective owners. Print speed may be affected by network, application or PC performance. Specifications and external appearances are subject to change without notice. Products are shown with optional features.

Printed in U.S.A. on recycled paper. G2208

